





**Clearing**  
Sta. 141+76 ± to Sta. 143+75 ± Lt. & Rt. - I-295  
Sta. 150+30 ± to Sta. 155+00 ± Lt. & Rt. (Median) - Rte. 1 Conn. N.B.  
Sta. 138+50 ± to Sta. 139+35 ± Rt. - Rte. 1 Conn. S.B.  
Sta. 142+55 ± to Sta. 144+00 ± Rt. - Rte. 1 Conn. S.B.

**Selective Clearing and Thinning**  
Sta. 150+30 ± to Sta. 155+00 ± Lt. - Rte. 1 Conn. N.B.  
Sta. 138+50 ± to Sta. 139+35 ± Rt. - Rte. 1 Conn. S.B.  
Sta. 141+75 ± to Sta. 144+00 ± Rt. - Rte. 1 Conn. S.B.

Roadway	Curve	Pi Sta	Δ	D	R	T	L	E
Median I-295	9	117+15.60	31°12'04" Lt.	1°00'	5729.58'	15998.0'	312013'	21915'
Rte. 1 Conn. S.B.	10	144+87.34	75°54'19" Lt.	6°15'	916.73'	715.01'	1214.49'	245.87'
Rte. 1 Conn. N.B.	11	148+84.75	31°09'13" Lt.	4°00'	1432.39'	399.31'	778.84'	54.62'
Rte. 1 Conn. N.B.	12	141+88.37	41°56'16" Lt.	2°30'	2291.83'	300.46'	597.51'	19.61'

**Survey Monuments**  
Sta. 128+50.00 - 100' Lt. - I-295  
Sta. 137+72.35 - 100' Rt. - Rte. 1 Conn. S.B.  
**Remove and Reset Monuments**  
Sta. 140+60 - 116' Lt. & 125' Lt.  
Sta. 142+08 - 120' Lt.  
Sta. 150+30 - 103' Lt.  
Sta. 21+70 - 40' Lt. - Broadway

**Bracing Assembly**  
Sta. 124+50, 150' Lt. (2) - I-295  
Sta. 128+66 ±, 150' Lt. (1) - I-295  
Sta. 143+00, 150' Rt. (2) - Rte. 1 Conn. S.B.  
Sta. 22+20, 70' Rt. (2) - Bdwy.  
Sta. 128+50, 150' Lt. (1) - I-295  
Sta. 22+20, 86' Rt. (2) - Bdwy.  
**Woven Wire Fence - Metal Posts**  
Rte. 1 Conn. Sta. 128+50, 150' Lt. - I-295 to 129+100, 174' Lt. - I-295 471'  
N.B. Sta. 129+12, 178' Lt. - I-295 to 145+45, 194' Lt. - I-295 1700.3'  
Sta. 22+20, 86' Rt. - Bdwy. to Sta. 146+00, 194' Lt. - I-295 1020.9'

**Drive Gateways, 16" Metal**  
Sta. 129+00, 174' Lt. - I-295 to 129+12, 178' Lt. - I-295  
Sta. 22+20, 70' Rt. - Bdwy.  
Sta. 133+44 103' Lt.  
Install: C.B. Type B-1  
12"x12" R.C.P. Stubbed into 30" R.C.P.  
Cost of Cutting into 30" R.C.P. to be Incidental to Drainage Items  
**Set 1969**  
Sta. 133+17 Skewed 53° Ahd. Lt.  
Install: 30"x62" R.C.P. Class IV  
Place Hand Laid Pipe Rap around Outlet  
Ditch Out Approx. 110' ±  
Sta. 25+09, 50' Rt. Bdwy.  
Const. C.B. Type B-1

**R.O.W. Monument**  
Sta. 128+50.00 - 150' Lt. - I-295  
Sta. 137+72.35 - 150' Rt. - Rte. 1 Conn. S.B.  
Sta. 146+00.00 - 150' Rt. - Rte. 1 Conn. N.B.  
Sta. 138+87.93 - 150' Lt. - Rte. 1 Conn. N.B.  
Sta. 22+10.00 - 60' Lt. - Broadway  
Sta. 23+00.00 - 60' Lt.

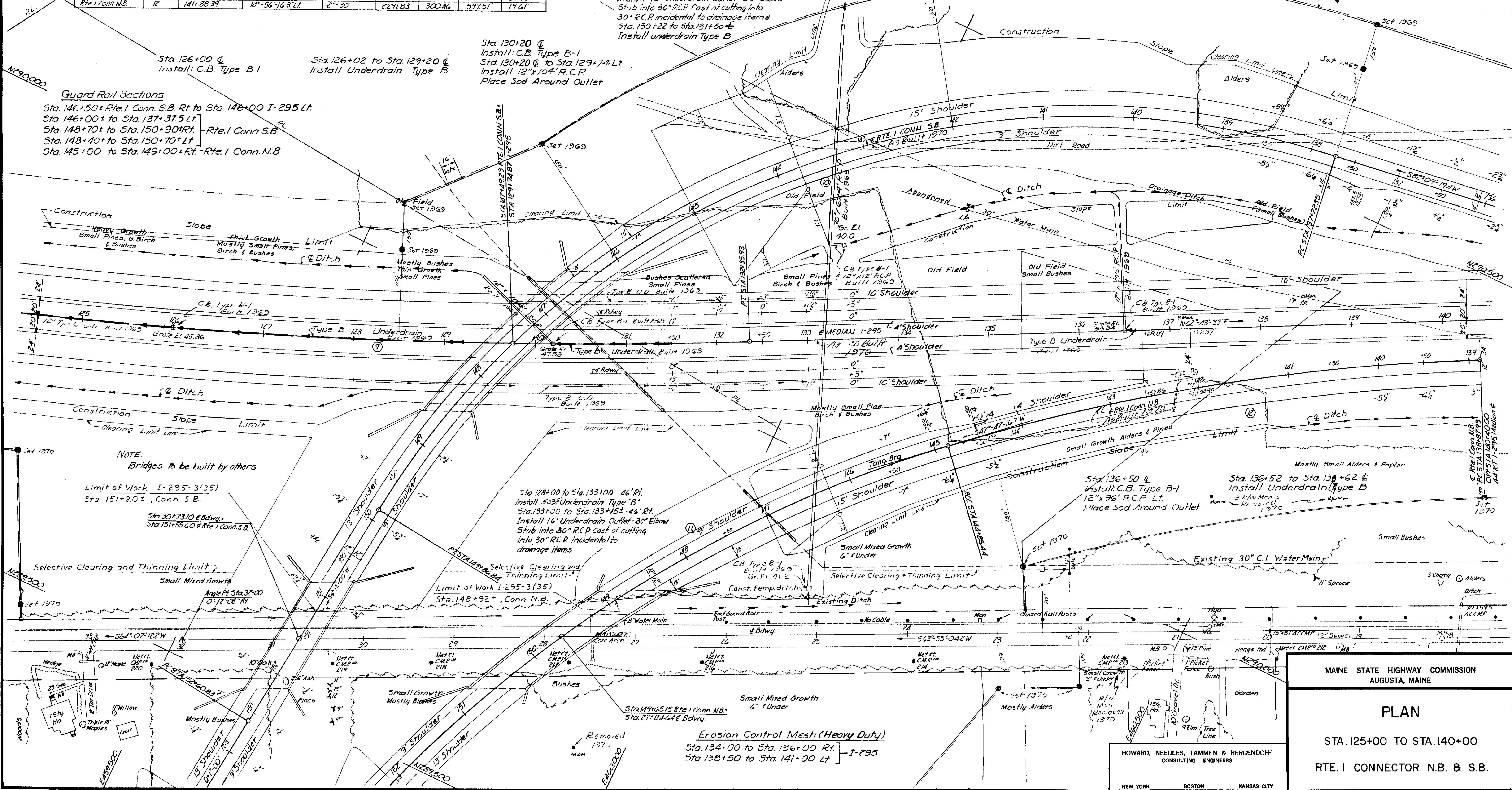
**Guard Rail Sections**  
Sta. 146+50 ± Rte. 1 Conn. S.B. Rt. to Sta. 148+00 I-295 Lt.  
Sta. 146+00 ± to Sta. 137+37.5 Lt. - Rte. 1 Conn. S.B.  
Sta. 148+70 ± to Sta. 150+90 ± Rt. - Rte. 1 Conn. S.B.  
Sta. 148+40 ± to Sta. 150+70 ± Lt. - Rte. 1 Conn. S.B.  
Sta. 145+00 to Sta. 149+00 ± Rt. - Rte. 1 Conn. N.B.

Sta. 129+74 to Sta. 133+06 - 46' Lt.  
Install: 30" Underdrain Type "B"  
Sta. 133+06 to Sta. 133+22 - 46' Lt.  
Install: 16" Underdrain outlet - 30" Elbow  
Stub into 30" R.C.P. Cost of cutting into 30" R.C.P. incidental to drainage items  
Sta. 130+22 to Sta. 131+50 ±  
Install Underdrain Type B

Sta. 130+20 ±  
Install: C.B. Type B-1  
Sta. 130+20 ± to Sta. 129+74 Lt.  
Install 12"x104" R.C.P.  
Place Sod Around Outlet

Sta. 126+02 to Sta. 129+20 ±  
Install Underdrain Type B

Sta. 126+00 ±  
Install: C.B. Type B-1



NOTE:  
Bridges to be built by others

Limit of Work I-295-3(35)  
Sta. 151+20 ±, Conn. S.B.

Sta. 30+73.10 ± Bdwy.  
Sta. 151+55.60 ± Rte. 1 Conn. S.B.

Sta. 128+00 to Sta. 133+00 46' Rt.  
Install: 5035 Underdrain Type "B"  
Sta. 133+00 to Sta. 133+15 ± 46' Rt.  
Install 16" Underdrain Outlet - 30" Elbow  
Stub into 30" R.C.P. Cost of cutting into 30" R.C.P. incidental to drainage items

Selective Clearing and Thinning Limit  
Limit of Work I-295-3(35)  
Sta. 148+92 ±, Conn. N.B.

Sta. 136+50 ±  
Install: C.B. Type B-1  
12"x96" R.C.P. Lt.  
Place Sod Around Outlet

Sta. 136+52 to Sta. 136+62 ±  
Install Underdrain Type B

**Erosion Control Mesh (Heavy Duty)**  
Sta. 134+00 to Sta. 136+00 Rt. - I-295  
Sta. 138+50 to Sta. 141+00 Lt.

MAINE STATE HIGHWAY COMMISSION  
AUGUSTA, MAINE

PLAN

STA. 125+00 TO STA. 140+00  
RTE. 1 CONNECTOR N.B. & S.B.

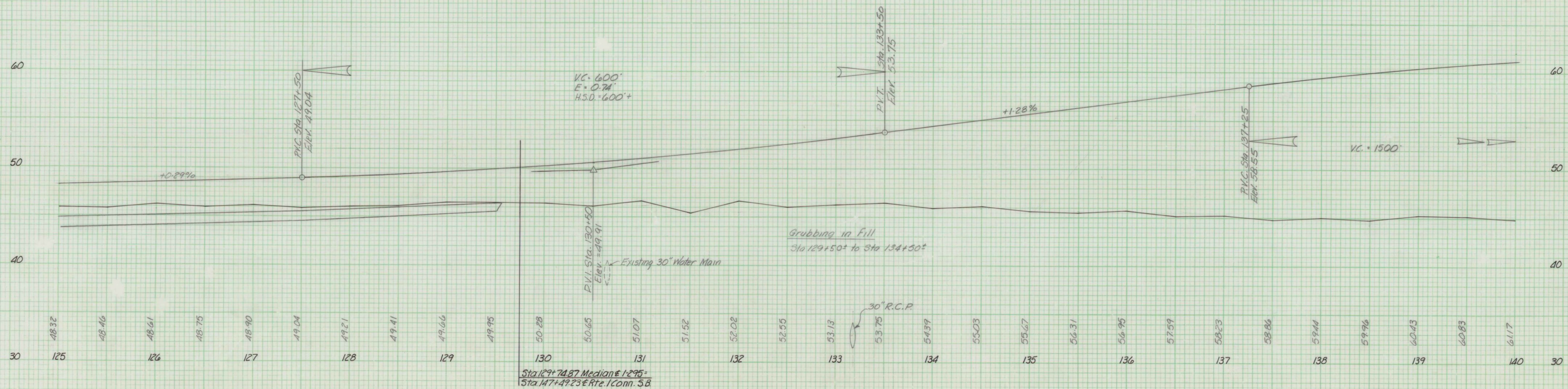
HOWARD, NEEDLES, TAMMEN & BERGENDOFF  
CONSULTING ENGINEERS

NEW YORK BOSTON KANSAS CITY

SOUTH PORTLAND



B. P. R. REG. NO.	STATE	PROJECT NUMBER	SHEET NO.	TOTAL SHEETS
1	MAINE	I-295-3(35)	39	114

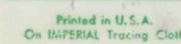
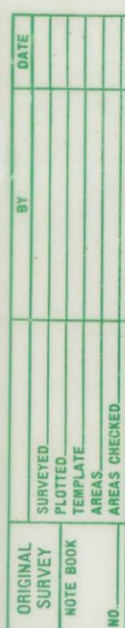








FINAL SURVEY	BY	DATE
SUNNYVED		
PLOTTED		
TEMPLATE		
AREAS		
NO		





B. P. R. REG. NO.	STATE	PROJECT NUMBER	SHEET NO.	TOTAL SHEETS
1	MAINE	I-295-3(35)	47	114

FINAL SURVEY	SURVEYED PLOTTED NOTE BOOK	DATE

ORIGINAL SURVEY	SURVEYED PLOTTED NOTE BOOK	DATE

